

# SCOPE

## CFL CIS Cable Identification System



Locate Cable Faults Easily & Quickly With...  
...CFL Series

## The Product

### Cable Identification System

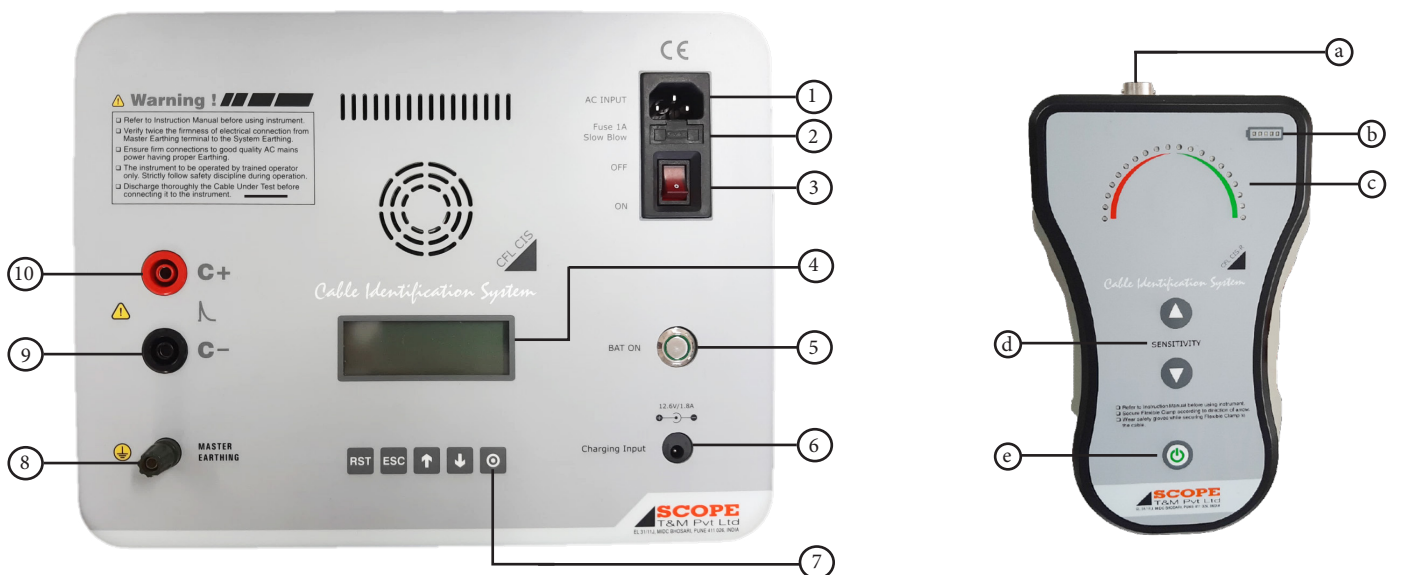
After excavation, sometimes it is confusing to identify the right cable from bunch of cables. Cable Identification is very important for safety of field personnel – Cutting a wrong cable can be fatal. So, we require a Cable Identification System having current direction facility to identify the wanted cable.

Cable Identification is the most critical and safety related sequence during all the procedure of Cable Fault Location. The correct identification of a cable out of a bundle of cables, where most of them can be cables in service, has to be carried out not only carefully, but also by means of an instrument widely eliminating the possibility of human error or misinterpretation.

The Cable Identification System, CFL CIS from SCOPE is the ultimate solution for identifying wanted (dead) cable from a bunch of cables in a trench, pit or cable rack. The SCOPE's Cable Identification System CFL CIS is designed to fulfill this most important safety aspects.

## The Measurement

SCOPE's Cable Identification System consists of Signal Transmitter (CFL CIS), Signal Receiver (CFL CIS-R) and Flexible Clamp. The CFL CIS is a mains as well as battery operated kit. It is connected to anyone core of the cable at one end and at another end the core is earthed. The return path is completed through the earth. CFL CIS transmits selectable current surges of 100A or 60 A. These current pulses generate an electromagnetic field around the cable which is picked up by flexible clamp placed around the cable being checked. The Receiver CFL CIS-R is connected to flexible clamp, which offers a LED scale interface to identify the correct cable from a bunch of cables.



① Mains Input Socket

② Fuse

③ Mains Supply ON/OFF Switch

④ 20X4 Line LCD

⑤ Battery ON/OFF Push Button

⑥ Battery Charging Socket

⑦ Key Board

⑧ Master Earthing Terminal

⑨ C- Output Connector

⑩ C+ Output Connector

Ⓐ Flexible Clamp Connector

Ⓑ Battery Level Indicator

Ⓒ LED Scale

Ⓓ Amplifier Setting Keys

Ⓔ Power ON/OFF Push Button

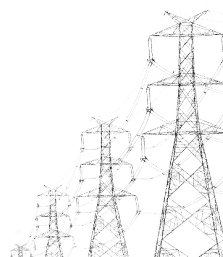
## Special Features

- User Friendly LED Indication for Right & Wrong Cable Identification from multiple cables
- Thin and Flexible Current Clamp for easy insertion between closely mounted Cables with locking facility
- 10 Stage amplifier setting for better signal identification
- Transmitter operation through Mains as well as In-built rechargeable battery
- Compact, Light Weight, Water Resistant and Dust Proof
- User friendly and simple operation

## Specifications

Parameters	CFL CIS
Pulse Amplitude	Selectable between 100A (55V) / 60A (36V)
Pulse Sequence	10 or 20 or 30 pulses / min, User configurable
Pulse Modulation	Alternative pulse at 1s and 2.5s
Pulse Width	72ms
Display	4 line x 20 character backlit LCD
Power Supply	90V to 265V AC, 50/60Hz
Operation	Mains or In-built 11.1V Lithium Ion Rechargeable battery
Battery Operating Time	6 Hours Min.
Environmental	-10°C to +55°C, 95% RH (Non-Condensing)
Dimension	339mm x 295mm x 152mm
Weight	6 Kg approx.

Parameters	CFL CIS-R
Display Type	LED Scale
Flexible Clamp	150mm Diameter
Sensitivity	100% at 31Ω loop resistance
Amplifier Setting	10 stages
Battery	11.1V Lithium Ion Rechargeable Battery
Operating Time	8 Hours Min.
Environmental	-10°C to +55°C, 95% RH (Non-Condensing)
Dimension	210mm x 124mm x 51mm
Weight	0.7 Kg approx.



## Standard Accessories

Mains cord, 3m long	1 No.
Testing Cables, 3m long each	1 Set
Master Earthing Cable, 5m long	1 No.
Short Link Cable	1 No.
Flexible Clamp with Cable, 2m long	1 Set
Fuses	1 Set
Battery Charger	1 Set
Operation Manual	1 No.
Soft Carrying Bag for Main Instruments and other accessories	1 Set
Factory Test and Calibration Report	1 No.

**Corporate Office**  
402, Aurus Chambers, Annex-A,  
S.S.Amrutwar Marg, Worli,  
Mumbai 400013, INDIA  
Phone : +91 22 4344 4244  
Fax : +91 22 4344 4242  
Email : marketing@scopetnm.com

**Works & After Seles**  
EL 31/11, 'J' BLOCK,  
MIDC Bhosari,  
Pune 411026, INDIA  
Phone : +91 20 6733 3999  
Fax : +91 20 6733 3900  
Email : works@scopetnm.com

*Simple solutions for difficult measurements®*

**SCOPE**  
T & M Pvt Ltd